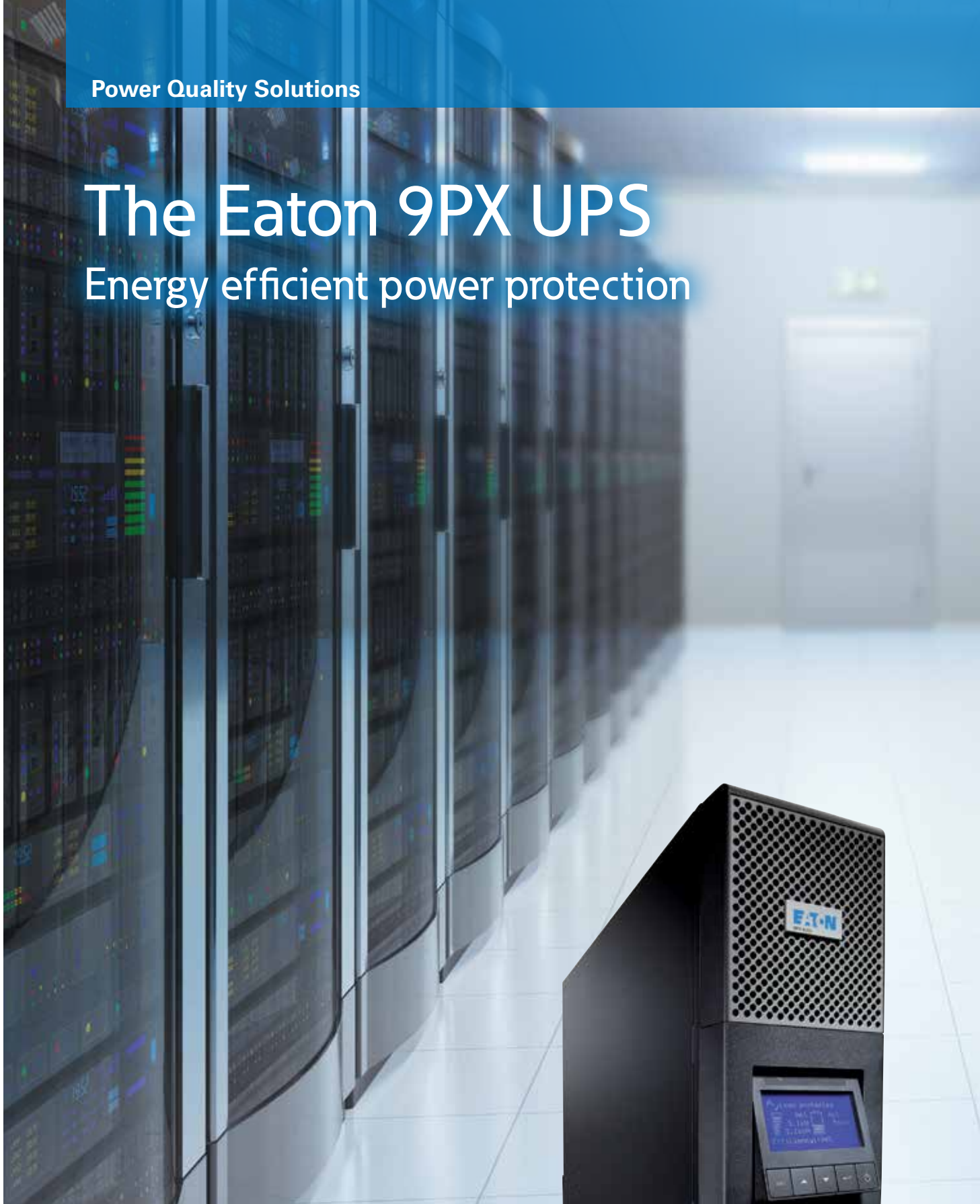


Power Quality Solutions

The Eaton 9PX UPS

Energy efficient power protection



EATON

Powering Business Worldwide

Performance and efficiency come together in the Eaton 9PX UPS

As an industry professional, and because of rising energy costs and the business need for energy-efficient performance, you'll be looking for ways to reduce costs and consumption. The Eaton 9PX UPS enables you to secure all your mission-critical applications, giving you the reductions in energy usage and costs you need.

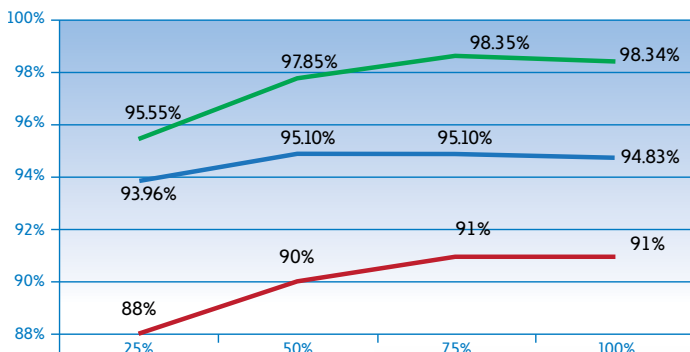
Eaton 9PX UPS key benefits

- Constantly monitors power conditions and regulating voltage and frequency
- Up to **95% efficiency** in online double conversion mode and 98% in high-efficiency mode
- 0.9 power factor delivers **28% more power** than UPS in its class
- Compact rack/tower versatile form factor, delivering up to **5400W in only 3U** and **10kW in only 6U**

Essentially, the Eaton 9PX UPS gives you the chance to optimise power density and minimise capital and operating expenditure, along with the assurance that, should the power go down, critical processes will be maintained in your IT infrastructures and other applications.

Features that set the Eaton 9PX UPS apart

- **New graphical LCD display** provides clear information on the UPS's status and measurements on a single screen which tilts 45° for ease-of-viewing
- **Metering energy consumption** – kWh values can be monitored using the LCD or our own Intelligent Power® Software Suite
- **Availability and Flexibility** – The internal bypass allows service continuity in case of internal fault, a maintenance bypass is also available for easy replacement of the UPS without powering down critical systems
- **Paralleling functionality** to achieve twice the power of unitary products using Hot Sync technology
- **Load segment control** enables prioritised shutdowns of nonessential equipment to maximise battery runtime for critical devices (5 and 6kVA UPS)
- **Serial, USB and relay connectivity**, plus an extra slot for an optional communication card
- **Intelligent Power® Software Suite** compatible with all major OS including virtualisation software such as VMware and Hyper-V is included with each UPS
- **Eaton ABM® battery management** technology for longer battery life
- Plus, add more runtime with up to **12 external hot-swappable battery modules**, able to run systems for hours if necessary



- 9PX 11kVA HE Mode
- 9PX 11kVA Online Mode
- Legacy UPS



Eaton 9PX UPS can easily be used as a rack or a tower model

Eaton innovating for more than 50 years

Eaton has been safeguarding the critical systems of businesses across the globe for over half a century. Whether protecting a single desktop or the largest data centre, Eaton solutions provide clean, uninterrupted power to keep mission-critical applications working.

We offer a comprehensive range of environmentally-sensitive, efficient, reliable UPSs, surge protective devices, power distribution units (PDUs), remote monitoring, meters, software, connectivity, enclosures, airflow management and professional services.



9PX LCD tilts 45° for ease-of-viewing

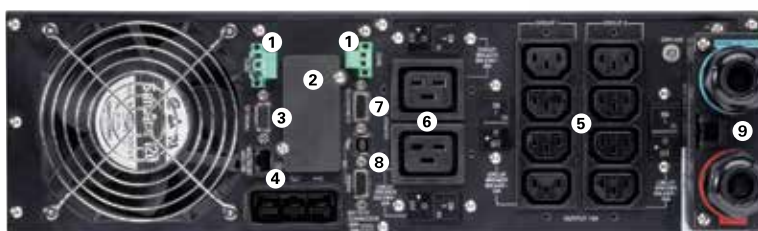
As the ultimate protection for your IT equipment, the Eaton 9PX UPS also integrates seamlessly into all major virtual environments including VMware, Hyper-V, Citrix XenServer, RedHat KVM. With Eaton you are sure to benefit from the best of virtualisation technology.



9PX 11kVA with Maintenance Bypass



- 1 Remote Off/On and Remote Power Off connectors
- 2 Slot for Network-MS, ModBus-MS or Relay-MS cards
- 3 Parallel operation port (DB15)
- 4 External battery module (EBM) connector with automatic detection (RJ11)



Eaton 9PX 6kVA 1:1

- 5 8 IEC 10A sockets (2 groups of 4 manageable sockets) with cable retention system
- 6 2 IEC 16A sockets with cable retention system
- 7 DB 9 with output contacts
- 8 USB and serial ports
- 9 Input/Output connection

Eaton 9PX UPS Technical Specifications

Technical Specifications	5kVA 1:1	6kVA 1:1	6kVA 3:1	8kVA 1:1 or 3:1	11kVA 1:1 or 3:1
Rating (kVA/kW)	5kVA/4.5kW	6kVA/5.4kW	6kVA/5.4kW	8kVA/7.2kW	11kVA/10kW
Electrical Characteristics					
Technology	On-line double conversion with Power Factor Correction (PFC) system				
Input voltage	200/208/220/230/240V 1:1		200/208/220/230/240V/250V 1:1, 380/400/415 3:1		
Input voltage range	176-276V without derating (up to 100-276V with derating) 1:1, 305V-480V without derating (up to 175V-480V with derating) 3:1				
Output voltage/THDU	200/208/220/230/240V +/- 1%; THDU <2%				
Input frequency range/THDI	40-70Hz, 50/60Hz autoselection, frequency converter as standard, THDI < 5%				
Efficiency	Up to 94% in Online mode, 98% in Hi-Efficiency mode				
Short circuit current	90A	90A	90A	120A	150A
Overload capacity	102-110% : 120s, 110-125%: 60s, 125-150%: 10s, >150%: 500ms		102-110% : 120s, 110-125%: 60s, 125-150%: 10s, >150%: 900ms		
Connections					
Input	Terminal block (up to 10 mm ²)		Terminal block (up to 16mm ²)		
Outputs	Terminal block + 2 controlled groups of 4 IEC C13 (10A) + 2 IEC C19 (16A)		Terminal block		
Outputs with HotSwap Maintenance Bypass	Terminal block + 3 IEC C13 (10A) + 2 IEC C19 (16A)		Terminal block + 4 IEC C19 (16A)		
Batteries					
Typical backup times at 50 and 70% load*					
9PX	13/10 min	11/8 min	30/20min	20/15 min	13/9min
9PX + 1 EBM	60/40 min	48/34 min	70/45min	48/32 min	32/21 min
9PX + 4 EBM	220/150 min	170/120 min	210/140 min	140/100 min	100/70 min
Battery management	ABM® and Temperature compensated charging method (user selectable), automatic battery test, deep discharge protection, automatic recognition of external battery units.				
Communication					
Communication ports	1 USB port, 1 RS232 serial port (USB and RS232 ports cannot be used simultaneously), 4 dry contacts (DB9), 1 mini terminal block for remote On/Off and 1 for remote power Off, 1 DB15 for parallel operation.				
Communication slot	1 slot for Network-MS card, ModBus-MS or Relay-MS cards.				
Operating conditions, standards and approvals					
Operating temperature	0 to 40°C continuous				
Noise level	<45dB	<45dB	<48db	<48db	<50db
Safety	IEC/EN 62040-1, UL 1778 (1:1 version)				
EMC, performance	IEC/EN 62040 -2, FCC Class A (1:1 version), IEC/EN 62040-3 (Performance)				
Approvals	CE, CB report (TUV), UL (1:1 version)				
Dimensions H x W x D/Weight					
UPS Dimensions	440(19")*130(3U)*685mm	440(19")*130(3U)*685mm	440(19")*260(3U+3U)*700mm	440(19")*260(3U+3U)*700mm	440(19")*260(3U+3U)*700mm
UPS Weight	48kg	48kg	88kg	84kg (1:1), 88kg (3:1)	86kg (1:1), 88kg (3:1)
EBM Dimensions	440(19")*130(3U)*645mm	440(19")*130(3U)*645mm	440(19")*130(3U)*680mm	440(19")*130(3U)*680mm	440(19")*130(3U)*680mm
EBM Weight	68kg	68kg	65kg	65kg	65kg
Power Module Dimensions	-	-	440(19")*130(3U)*700mm	440(19")*130(3U)*700mm	440(19")*130(3U)*700mm
Power Module Weight	-	-	23kg	19kg (1:1), 23kg (3:1)	21kg (1:1), 23kg (3:1)
Customer Service and Support					
Warranty	3 years on electronics, 2 years on battery			2 years on electronics, 2 years on battery	

* Runtimes are shown at 0.7 power factor. Backup times are approximate and may vary with equipment, configuration, battery age, temperature, etc

Parts Numbers	9PX 5kVA 1:1	9PX 6kVA 1:1	9PX 8kVA 1:1	9PX 11kVA 1:1	9PX 6kVA 3:1	9PX 8kVA 3:1	9PX 11kVA 3:1
UPS with Rack Kit	9PX5KiRT	9PX6KiRT	9PX8KiRT	9PX11KiRT	9PX6KiRT31	9PX8KiRT31	9PX11KiRT31
EBM with Rack Kit	9PXEBM180RT	9PXEBM180RT	9PXEBM240RT	9PXEBM240RT	9PXEBM240RT	9PXEBM240RT	9PXEBM240RT
Power Module	-	-	9PX8KiPM	9PX11KiPM	9PX6KiPM31	9PX8KiPM31	9PX11KiPM31
HotSwap Maintenance Bypass	MBP6Ki	MBP6Ki	MBP11Ki	MBP11Ki	MBP11Ki31	MBP11Ki31	MBP11Ki31
9PX ModularEasy (paralleling kit)	9PXMEZ6Ki	9PXMEZ6Ki	9PXMEZ11Ki	9PXMEZ11Ki	-	-	-
Transformer Module single phase	TFMR11Ki	TFMR11Ki	TFMR11Ki	TFMR11Ki	TFMR11Ki	TFMR11Ki	TFMR11Ki
Supercharger with Rack Kit	-	-	SC240RT	SC240RT	SC240RT	SC240RT	SC240RT
1.8m Battery Connection Cable	EBMCBL180	EBMCBL180	EBMCBL240	EBMCBL240	EBMCBL240	EBMCBL240	EBMCBL240
Battery Integration System	BINTSYS	BINTSYS	BINTSYS	BINTSYS	BINTSYS	BINTSYS	BINTSYS
Rack Kit	9RK	9RK	9RK	9RK	9RK	9RK	9RK

SINGAPORE
Tel : +65 6825 1684
Fax : +65 6825 1689
EatonSEA@eaton.com
www.eaton.com/powerquality

INDONESIA
Tel : +62 21 2949 9000
Fax : +62 21 2949 9001

MALAYSIA
Tel : +603 7804 3618
Fax : +603 7803 6193

THAILAND
Tel : +66 2575 0530
Fax : +66 2575 1579

VIETNAM
Hanoi
Tel : +84 4 3936 5303
Fax : +84 4 3936 5307

Ho Chi Minh
Tel : +84 8 6255 6737
Fax : +84 8 6255 6801

Eaton is the trade name, trademark, and/or service mark of Eaton Corporation or its subsidiaries and affiliates.