

# enLOGIC

## Rack PDU Product Guide

Introducing the industry's most innovative energy metering Rack Power Distribution Units (PDUs) designed to simplify rack management in your data centre.

The Enlogic family of enterprise-grade rack PDUs includes comprehensive power management, watt-hour energy metering, and environmental monitoring; all within the industry's slimmest space-saving design.

A large selection of standard and configurable PDU options is available to meet your specific rack management application.

### Product families:

- ▶ **Metered PDU (EN1000 Series)**  
Real-time metering and network monitoring of power loads for overload avoidance, capacity & load balancing, and energy use optimisation.
- ▶ **Metered, Outlet Switched PDU (EN2000 Series)**  
Remote outlet on/off switching for power-up sequencing, remote power cycling, and outlet use management combined with all features of the EN1000 Series.
- ▶ **Outlet Metered PDU (EN5000 Series)**  
Individual outlet power and energy metering combined with all features of the EN1000 Series.
- ▶ **Outlet Metered, Outlet Switched PDU (EN6000 Series)**  
Comprehensive management solution includes features of both the EN2000 and EN5000 Series.
- ▶ **Inline Energy Meter (EZ1000 Series)**  
Energy metering device adds EN1000 Series capabilities for existing basic PDUs or stand-alone equipment.



Enterprise scale thinking

# enLOGIC

**Power and Energy Metering** (V, A, VA, W, kWh, pf) to +/- 1% billing-grade accuracy.

## Circuit Breaker Status Monitoring

provides active monitoring and alarming of circuit breaker on/off status (excludes EN1000 series).

## Locking IEC Receptacles

provide secure power connection when used with optional locking power cords

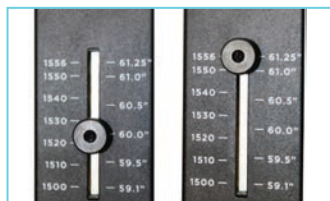


**Hot Swappable Network Management Card** for industry best MTTR.

**Environmental Monitoring** ready with support for up to 6 plug-and-play sensors.



**Colour-Coded Outlets and Breakers** for easy visual identification.



**Adjustable Tool-Less Mounting** and universal mounting brackets included for ease of installation .

**Field Rewireable**  
Top or Front Power Cord.



**Premium Hydraulic-Magnetic Branch Circuit Breakers** are stable at extreme hot aisle temperatures.



**Ultra-Low Profile Design.**

- Chassis depth is only 44 mm on EN1000 models, and 50 mm on all other models.
- Breaker depth is only 56 mm on most EN1000 models, and 62 mm on most others.

**Large, easy-to-view oLED Display.**



**Daisy chain to manage and monitor** up to 4 PDUs and 24 environmental sensors through a single IP address.



**Localised Convenience Outlets** options including UK BS1363, German CEE 7/4, and French CEE 7/5.



# Product Range

Custom configurable PDU options are available

## EN2000, EN5000, and EN6000 Series

|         | Input Circuit | Max Power | Total Outlets | Outlet Configuration     | Chassis Depth (L x W x D), mm | Max Chassis Depth at Breaker, mm | ENLOGIC SKU                        |                       |                                       |
|---------|---------------|-----------|---------------|--------------------------|-------------------------------|----------------------------------|------------------------------------|-----------------------|---------------------------------------|
|         |               |           |               |                          |                               |                                  | PDU METERED OUTLET SWITCHED EN2000 | OUTLET METERED EN5000 | OUTLET METERED OUTLET SWITCHED EN6000 |
| 1-Phase | 16A           | 3.84kVA   | 12            | (12)C13                  | 1065 x 55 x 50                | n/a                              | EN2101                             | EN5101                | EN6101                                |
|         | 32A           | 7.68kVA   | 22            | (18)C13 (4)C19           | 1730 x 55 x 50                | 62                               | EN2105                             | EN5105                | EN6105                                |
|         | 32A           | 7.68kVA   | 24            | (20)C13 (4)C19           | 1826 x 55 x 50                | 62                               | EN2113                             | EN5113                | EN6113                                |
|         | 32A           | 7.68kVA   | 24            | (24)C13                  | 1730 x 55 x 50                | 62                               | EN2103                             | EN5103                | EN6103                                |
|         | 32A           | 7.68kVA   | 32            | (32)C13                  | 1826 x 55 x 50                | 80                               | EN2102                             | EN5102                | EN6102                                |
|         | 32A           | 7.68kVA   | 22            | (18)C13 (2)C19 (2)BS1363 | 1730 x 55 x 50                | 62                               | EN2109                             | EN5109                | EN6109                                |
|         | 32A           | 7.68kVA   | 24            | (20)C13 (2)C19 (2)BS1363 | 1826 x 55 x 50                | 62                               | EN2118                             | EN5118                | EN6118                                |
|         | 32A           | 7.68kVA   | 22            | (18)C13 (2)C19 (2)Schuko | 1730 x 55 x 50                | 62                               | EN2108                             | EN5108                | EN6108                                |
|         | 32A           | 7.68kVA   | 24            | (20)C13 (2)C19 (2)Schuko | 1826 x 55 x 50                | 62                               | EN2116                             | EN5116                | EN6116                                |
|         | 32A           | 7.68kVA   | 22            | (18)C13 (2)C19 (2)French | 1730 x 55 x 50                | 62                               | EN2106                             | EN5106                | EN6106                                |
|         | 32A           | 7.68kVA   | 24            | (20)C13 (2)C19 (2)French | 1826 x 55 x 50                | 62                               | EN2115                             | EN5115                | EN6115                                |
| 3-Phase | 16A           | 11.52kVA  | 24            | (18)C13 (6)C19           | 1730 x 55 x 50                | n/a                              | EN2110                             | EN5110                | EN6110                                |
|         | 32A           | 23.04kVA  | 24            | (12)C13 (12)C19          | 1826 x 55 x 50                | 80                               | EN2111                             | EN5111                | EN6111                                |
|         | 32A           | 23.04kVA  | 24            | (24)C13                  | 1826 x 55 x 50                | 80                               | EN2112                             | EN5112                | EN6112                                |

## EN1000 Series

|         | Input Circuit | Max Power | Total Outlets | Outlet Configuration     | Chassis Depth (L x W x D), mm | Max Chassis Depth at Breaker, mm | ENLOGIC SKU PDU METERED |
|---------|---------------|-----------|---------------|--------------------------|-------------------------------|----------------------------------|-------------------------|
| 1-Phase | 16A           | 3.84kVA   | 24            | (24)C13                  | 1065 x 55 x 44                | n/a                              | EN1101                  |
|         | 32A           | 7.68kVA   | 36            | (30)C13 (6)C19           | 1730 x 55 x 44                | 56                               | EN1105                  |
|         | 32A           | 7.68kVA   | 42            | (36)C13 (6)C19           | 1826 x 55 x 44                | 56                               | EN1113                  |
|         | 32A           | 7.68kVA   | 36            | (30)C13 (4)C19 (2)BS1363 | 1730 x 55 x 44                | 56                               | EN1109                  |
|         | 32A           | 7.68kVA   | 42            | (36)C13 (4)C19 (2)BS1363 | 1826 x 55 x 44                | 56                               | EN1118                  |
|         | 32A           | 7.68kVA   | 36            | (30)C13 (4)C19 (2)Schuko | 1730 x 55 x 44                | 56                               | EN1108                  |
|         | 32A           | 7.68kVA   | 42            | (36)C13 (4)C19 (2)Schuko | 1826 x 55 x 44                | 56                               | EN1116                  |
|         | 32A           | 7.68kVA   | 36            | (30)C13 (4)C19 (2)French | 1730 x 55 x 44                | 56                               | EN1106                  |
|         | 32A           | 7.68kVA   | 42            | (36)C13 (4)C19 (2)French | 1826 x 55 x 44                | 56                               | EN1115                  |
| 3-Phase | 16A           | 11.52kVA  | 42            | (36)C13 (6)C19           | 1730 x 55 x 44                | n/a                              | EN1119                  |
|         | 32A           | 23.04kVA  | 36            | (24)C13 (12)C19          | 1730 x 55 x 44                | 74                               | EN1120                  |
|         | 32A           | 23.04kVA  | 42            | (30)C13 (12)C19          | 1826 x 55 x 44                | 74                               | EN1111                  |
|         | 32A           | 23.04kVA  | 48            | (48)C13                  | 1826 x 55 x 44                | 74                               | EN1112                  |

## EZ1000 Inline Energy Meter

|         | Input Circuit | Max Power | Chassis Depth (L x W x D), mm | ENLOGIC SKU         |
|---------|---------------|-----------|-------------------------------|---------------------|
|         |               |           |                               | INLINE ENERGY METER |
| 1-Phase | 16A           | 3.84kVA   | 350x55x110                    | EZ1151              |
|         | 32A           | 7.68kVA   | 350x55x110                    | EZ1152              |
|         | 63A           | 15.12kVA  | 445x55x110                    | EZ1154              |
| 3-Phase | 16A           | 11.52kVA  | 350x55x110                    | EZ1156              |
|         | 32A           | 23.04kVA  | 350x55x110                    | EZ1157              |
|         | 63A           | 45.36kVA  | 445x55x110                    | EZ1159              |

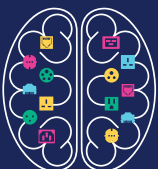
## Environmental Sensors

| Description                           | ENLOGIC SKU |
|---------------------------------------|-------------|
| Temperature Sensor                    | EA9102      |
| Temperature and Humidity Sensor       | EA9103      |
| (3) Temperature + (1) Humidity Sensor | EA9105      |
| Sensor Input Hub (3 sensor inputs)    | EA9106      |
| Dry Contact Cable                     | EA9110      |
| Spot Fluid Leak Sensor                | EA9111      |
| Rope Fluid Leak Sensor                | EA9112      |

Enterprise scale thinking

## Product Features

|  | Outlet Metered, Outlet Switched EN6000 | Outlet Metered EN5000 | PDU Metered, Outlet Switched EN2000 | PDU Metered EN1000 | Inline Energy Meter EZ1000 |
|--|--|-----------------------|-------------------------------------|--------------------|----------------------------|
| <b>PDU Power Metering and Monitoring</b> <ul style="list-style-type: none"> <li>PDU level watt-hour energy metering (kWh)</li> <li>PDU level power measurements (W)</li> <li>Input Phase level power measurements (V, A, VA, kWh, pf)</li> <li>Circuit breaker level current measurements</li> <li>High-accuracy, billing-grade metering capabilities</li> <li>Embedded memory log to record/view/report historical data</li> <li>User customisable alarm thresholds &amp; notifications</li> </ul>                          | ●                                      | ●                     | ●                                   | ●                  |                            |
| <b>Outlet Level Switching</b> <ul style="list-style-type: none"> <li>Remote On/Off power control by individual outlet</li> <li>User-defined power-on time delay to sequence IT equipment</li> <li>Automatic sequencing to avoid inrush current overload</li> <li>Outlet level user security with assignable roles and user access</li> </ul>   | ●                                      |                       | ●                                   |                    |                            |
| <b>Outlet Level Power Metering</b> <ul style="list-style-type: none"> <li>Outlet level watt-hour energy metering (kWh)</li> <li>Outlet level power measurements (V,A,VA, W, pf)</li> <li>Outlet level information for Green Grid Level 3 PUE Calculations</li> </ul>   | ●                                      | ●                     |                                     |                    |                            |
| <b>Design Features</b> <ul style="list-style-type: none"> <li>Low profile, space saving design</li> <li>Ultra low profile circuit breakers on most models</li> <li>Adjustable tool-less mounting system</li> <li>Colour-coded receptacles</li> <li>Locking IEC receptacles and locking power cord compatible</li> <li>Field rewirable input cord for front or top mounting</li> <li>Units with UK, German or French convenience outlets</li> </ul>   | ●                                      | ●                     | ●                                   | ●                  |                            |
| <b>Environmental &amp; Security Management</b> <ul style="list-style-type: none"> <li>Optional Plug &amp; Play environmental sensors including temperature, humidity, dry contact and water leak</li> <li>Rack access monitoring with door contact switch</li> <li>User customisable alarm thresholds and notifications</li> </ul>   | ●                                      | ●                     | ●                                   | ●                  | ●                          |
| <b>Network Management and Local Display Interface</b> <ul style="list-style-type: none"> <li>Full featured network management and alerting capabilities supporting HTTP, HTTPS, SSH, Telnet, SNMP, Syslog and email</li> <li>Strong encryption, passwords, and advanced authorisation options including local permissions, LDAP/S, and Active Directory</li> <li>Daisy Chain up to 4 Rack PDU's and 24 environmental sensors through a single IP address</li> <li>Largest-in-class, high-visibility, oLED display</li> </ul> | ●                                      | ●                     | ●                                   | ●                  | ●                          |
| <b>Circuit Breaker Status Monitoring</b> <ul style="list-style-type: none"> <li>Active monitoring and alarming of circuit breaker on/off status</li> </ul>   | ●                                      | ●                     | ●                                   |                    |                            |



**EnLogic Systems Europe, Ltd.**  
 Worcester  
 United Kingdom WR1 2PG  
 Phone: +44 (0) 1905 401715

**EnLogic Systems, LLC.**  
 Wildwood  
 Missouri USA 63040  
 Phone: +1 636-821-5200